



OVERVIEW

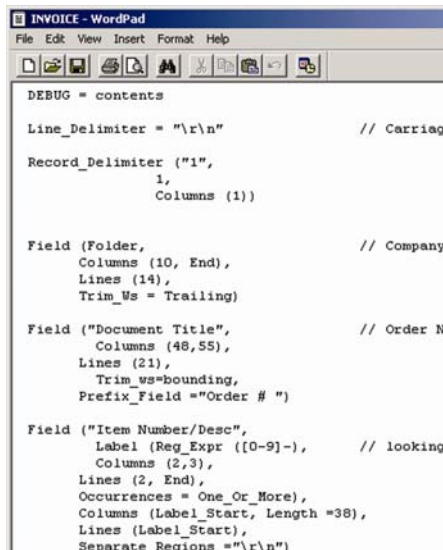
Alchemy DataGrabber Input Module

FEATURES AT A GLANCE

- The 'Swiss Army Knife' of text parsers
- High speed processing operations using personal computers
- COLD/COM solution
- Creates large image archives on the fly
- Powerful, flexible scripting language

Captaris Alchemy DataGrabber is an extension for the Alchemy Administrator client that parses ASCII text and EBCDIC files into an Alchemy repository. Used for COLD and COM (Computer Output to Microfilm) replacement applications, or for creating large image archives.

DataGrabber imports text data into an Alchemy repository at very high speeds. To enhance the presentation for end-users, the Alchemy administrator can design bitmap overlays of the original report or statement. Alchemy 8.0 clients also have a new Greenbar viewer option.



```
DEBUG = contents

Line_Delimiter = "\r\n"           // Carriag

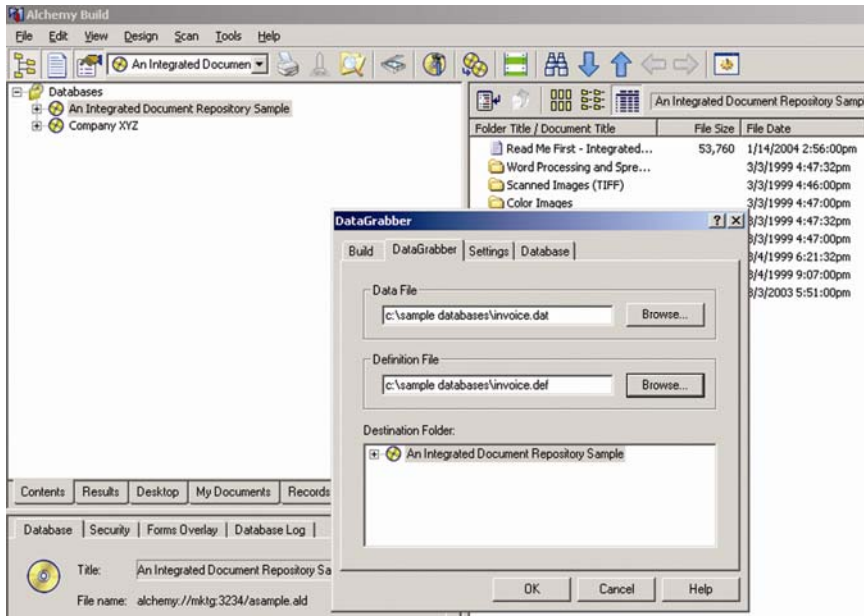
Record_Delimiter ("1",
                 1,
                 Columns (1))

Field (Folder,
      Columns (10, End),
      Lines (14),
      Trim_Us = Trailing)           // Company

Field ("Document Title",
      Columns (48,55),
      Lines (21),
      Trim_Us=bounding,
      Prefix_Field ="Order # ")    // Order N

Field ("Item Number/Desc",
      Label (Reg_Expr ([0-9]-),
      Columns (2,3),
      Lines (2, End),
      Occurrences = One_Or_More),
      Columns (Label_Start, Length =38),
      Lines (Label_Start),
      Separate_Regions ="\r\n")
```

Here's how DataGrabber works. First, in any text editor create a Definition file using the powerful and versatile DataGrabber scripting language. This will determine exactly how the Data file will be parsed: where does a record begin and end; what new repository fields to create on the fly; what data to extract into the fields; what if any files to merge with the data records; when to create a new folder; and much more.



Then within the Alchemy Administrator program (formerly called Build), run the DataGrabber operation. This will process the information, add new records to the repository and update the indexing methods you selected.

IMR also offers a runtime version of DataGrabber for applications where one Definition file can be used to process files on many computers. Examples include processing the export files from a capture system where the data export format is always the same. Many IMR resellers and service bureaus can provide Definition file services.

SYSTEM REQUIREMENTS

Client

- Alchemy Administrator 8.0 license (with Server, Pro or Gold)

Compatible Files

- Any ASCII text file
- EBCDIC files
- To process intelligent print stream and PDF report files, please refer to the Mercury solutions.

FOR MORE INFORMATION

Captaris Business Information Delivery solutions capture, process, archive and deliver data and documents enabling customers to reduce costs and increase the performance of critical business information investments. Through its global distribution network, Captaris delivers cost-effective software products and services that help organizations manage and leverage the value of corporate information. In partnership with leading enterprise technology companies, Captaris has installed more than 90,000 systems in 95 countries in companies of all sizes, including the entire Fortune 100. For more information please contact us at www.Captaris.com/Alchemy or +1.303.689.0022.

©2004 All rights reserved. No part of this publication may be reproduced, transmitted, transcribed, stored in a retrieval system, or translated into any language in any form by any means without the written permission of Captaris. Captaris products Alchemy, Interchange, RightFax and Teemplate are trademarks of Captaris. All other company, brand and product names are the property and/or trademarks of their respective companies. MC0010159