

Faxcore Email Gateway

In an effort to eliminate any IT concerns about installing 3rd party software on the email server, the Fax Connector is installed within FaxCore and a new "Route" is created on the email server. The "Route", created with native Connectors in Exchange, simply forwards messages destined for a "FAX" address to the Fully Qualified Domain Name (FQDN) of the FaxCore server.

The Faxcore Email Gateway includes the following functionality:

- ▶ Allows emails to fax requests to be delivered directly to the Faxcore server from any email client.
- ▶ Provides direct conversion of Microsoft Exchange Business Fax address types to outbound fax addresses.
- ▶ Advanced configuration allows administrators to grant email to fax privileges to specific users or mail server domains, eliminating the possibility of external spamming of the Faxcore server.
- ▶ Attachments to the email message are converted to faxable images by the FaxCore Rendering Service.

FaxCore supports all three versions of the Microsoft Exchange Server. Refer the appropriate instruction set for your version of Microsoft Exchange.

FaxCore integration with Exchange Server 2000 and 2003

- ▶ SMTP Connector.
- ▶ MX record in the DNS for the FaxCore server.

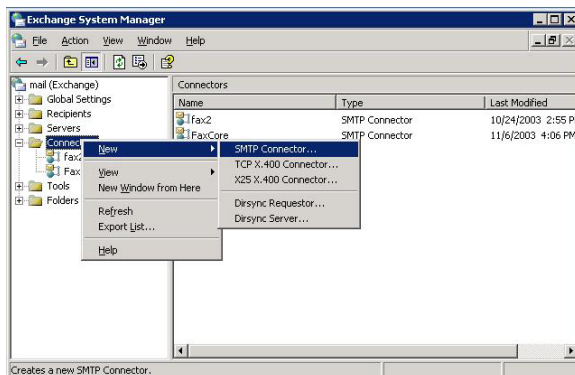
Configuring Exchange to send faxes to FaxCore

1. Launch the Exchange System Manager:

For Exchange 2000, select Administrative Groups, Routing Groups, Connectors.

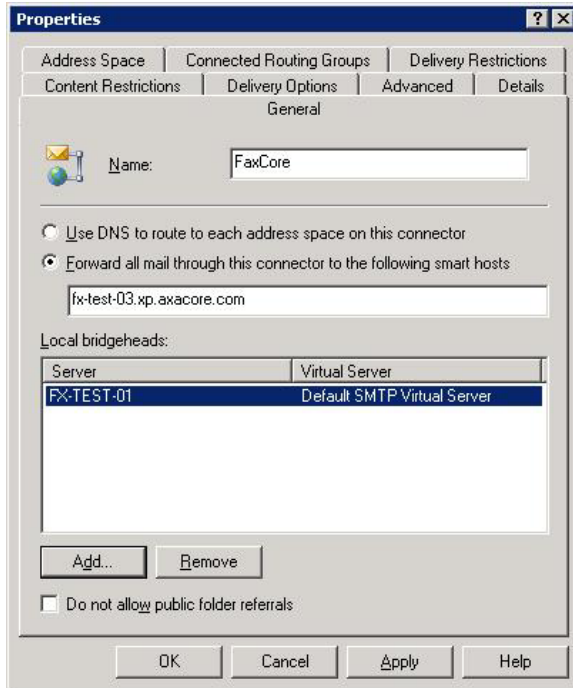
For Exchange 2003, select Connectors.

Right click then select New, then select SMTP Connector.

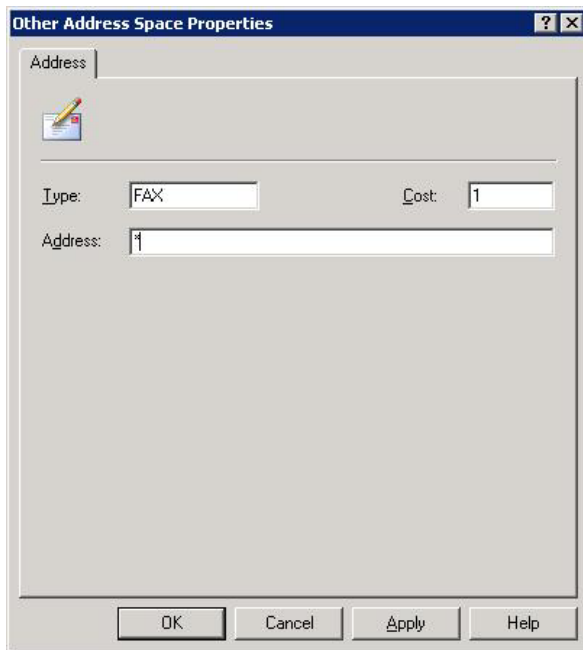


2. Configure the Connector

- a. Provide a Name for the new Connector (FaxCore is recommended).
- b. Check "Forward all mail through this connector to the following smart host" and set the smart host to be the Fully Qualified Domain Name of the FaxCore server.
- c. Add a Local Bridgehead, select the exchange server from the list (Click add and select the server from the list.)



3. Enter FAX in the Type field, and confirm 1 in the Cost field and * in the Address field and finish by clicking OK.



In order to test the new Connector, send an email to the Business Fax address of an Outlook Contact or enter a one-off address in the To field of the mail message with the following syntax. [FAX:RecipientName@faxnumber]. If Outlook is not able to resolve the message type, it means that the new Connector has not been propagated yet. The address type of FAX is usually resolvable within a few minutes of creating the Connector.